



ZSPEC®

FLOW CONTROL

VALVES & FITTINGS

OILFIELD | MARINE | INDUSTRIAL | AGRICULTURE

ZSPEC®
CATALOG

ZSPEC®
FLOW CONTROL



VALVES & FITTINGS

OILFIELD | MARINE | INDUSTRIAL | AGRICULTURE

5728 North Eldridge Parkway, B-2 Suite 101
Houston, TX 77041
United States

Phone : (713) 329-5700

Fax : (713) 329-5703

www.zspec.com

© 2025 ZSPEC® Flow Control, ALL Rights Reserved.



TABLE OF CONTENTS

| | |
|------------------------------------|-------|
| Company Overview | 4 |
| Resilient Seated Butterfly Valves | 6 |
| High Performance Butterfly Valves | 7 |
| Gate Valves | 7 |
| Check Valves | 8 |
| Ball Valves | 9-11 |
| Flanged End Ball Valves | 12 |
| Non-Freeze Tank Valves | 12 |
| Bull Plugs | 12 |
| Swage Nipples | 12 |
| Seamless Nipples | 12 |
| Needle Valves | 13 |
| Swivel Joints | 13 |
| Expansion Joints | 13 |
| Pup Joints | 14 |
| Bolted Sleeve Couplings | 14 |
| Chokes | 14 |
| Crossovers | 15 |
| Flanged Crossovers & Adapters | 16 |
| Bulldog Tank Unions | 16 |
| Plug Valves | 17 |
| Hammer Unions | 18 |
| Integral Fittings | 19-20 |
| Manifolds | 20 |
| Pony Rods | 20 |
| Sucker Rods Couplings | 20 |
| 777z Heavy Duty Flexible Couplings | 20 |

COMPANY OVERVIEW

ZSPEC® FLOW CONTROL - VALVES & FITTINGS

Zspec Flow Control, based out of Houston, Texas, supplies top-quality valves and fittings to distributors throughout the United States.

We are guided by a singular determination to do whatever it takes to be a reliable supplier for our customers with our ready-to-ship inventory.



VALVES & FITTINGS



EXPERIENCE

Our people have decades of industry experience, and they bring that knowledge to bear in service to you.



QUALITY

The best valves and fittings from the best manufacturers ensure your customers will always be happy with the product.



SUPPORT

We're here for you when you need us, fulfilling your orders and solving your supply problems.

ZSPEC® Flow Control – A top-quality valves and fittings supplier serving distributors in the oil field, industrial, marine and agricultural industries.



You can learn more about our **ZSPEC®** product offerings in the corresponding product catalog and at our website, **www.zspec.com**.



ZSPEC® Flow Control

RESILIENT SEATED BUTTERFLY VALVES



BW Series Butterfly Valve

Wafer Style w/ Guide Holes,
Long Neck Design
200 PSI NSCP
Sizes: 2" thru 20"
(larger diameters are available)



BL Series Butterfly Valve

Lug Style Valve,
Long Neck Design
200 PSI NSCP
Sizes: 2" thru 24"
(larger diameters are available)



RL Series Butterfly Valve

Lug Style Valve,
2-pc Stem Design
200 PSI NSCP
Sizes: 2" thru 12"



RRW Series Butterfly Valve

Round Wafer Style,
Long Neck Design
200 PSI NSCP
Sizes: 2" thru 12"



RNW Series w/ Square Stem

Notched Body Wafer Style,
Short Neck Design, Square Stem
200 PSI NSCP
Sizes: 2" thru 12"



RNW Series Butterfly Valve

Notched Body Wafer Style,
Short Neck Design
200 PSI NSCP
Sizes: 2" thru 12"



RNW Teflon Series Butterfly Valve

Notched Body Wafer Style,
Short Neck Design
150 PSI NSCP
Sizes: 2", 3", 4", 6"



Stem Extension for Butterfly Valves

Stem Extensions are available
for all Butterfly Valves. Standard
lengths are 2 ft and 4 ft.



RNW6BT Series Butterfly Valve

6 Bolt Notched Body Wafer Style,
Short Neck Design, Square Stem
200 PSI NSCP
Sizes: 3", 4", 5"



Gear Op for Butterfly Valves

Gear Operators are available for
all butterfly valves.



T Series Threaded End Butterfly Valve

200 PSI NSCP
Sizes: 2", 3", 4", 6"



Pneumatic Actuators

Direct Mount Pneumatic Actua-
tors are available for all butterfly
valves.
Sizes: 2" thru 12"



G Series Grooved End Butterfly Valve

200 PSI NSCP
Sizes: 2" thru 12"



Handle for Butterfly Valves

All butterfly valves come standard
with handles, however spare
handles may be purchased.
*They are available for DD and Square
stemmed valves.*

HIGH PERFORMANCE BUTTERFLY VALVES



HP Series High Performance Butterfly Valve

Lug Style Valve, CF8M Body and Disc
Classes: 150, 300
Sizes: 3" thru 24"

GATE VALVES



BGV Series Brass Gate Valve

FNPT Ends
200 PSI NSCWP
Sizes: 3/8" thru 4"



QL Series Quick Lever Brass Gate Valve

FNPT Ends
Sizes: 2", 3", 4", 6"

ZSPEC® Flow Control – A top quality valves and fittings supplier serving distributors in the oil field, industrial, marine and agricultural industries.

ZSPEC®
FLOW CONTROL
VALVES & FITTINGS
OILFIELD | MARINE | INDUSTRIAL | AGRICULTURE

CHECK VALVES



BCV Series 200 PSI Brass Check Valve

FNPT Ends,
200 PSI NSCWP
Sizes: 3/8" thru 4"



BCVR Series 300 PSI Brass O Ring Style Check Valve

FNPT Ends, Clapper O ring
300 PSI NSCWP
Sizes: 1", 2", 3", 4"



BCVRG Series 300 PSI Grooved End Brass O Ring Style Check Valve

Grooved Ends, Clapper O Ring
300 PSI NSCWP
Sizes: 2", 3", 4"



D Series Ductile Iron Swing Check Valve

NACE MR0175, FNPT Ends
Available Pressures: 300, 600, 750,
1,000, 1,500 & 2,000 PSI NSCWP
Sizes: 1", 2", 2-1/2", 3", 4"



C Series WCB Swing Check Valve

NACE MR0175, FNPT Ends
2,160, 3,000 & 5,000 PSI NSCWP
Sizes: 1", 2", 3"



ICV Series 316SS Inline Check Valve

MNPT x FNPT or FNPT x FNPT Ends
Viton O Ring
6,000 or 10,000 PSI NSCWP
Sizes: 1/8", 1/4", 1/2", 3/4", 1"



1000# CF8M Swing Check Valve

1000# CF8M Swing Check Valve
FNPT Ends
1,000 PSI NSCWP
Sizes: 1/2" thru 4"



ICV Series Brass Inline Check Valve

MNPT x FNPT Ends
Viton O Ring
3,000 PSI NSCWP
Sizes: 1/8", 1/4", 1/2", 3/4", 1"



Ductile Iron Ball Type Check Valve

NACE MR0175
FNPT Ends
Viton Seat, 316SS Ball
2,000 PSI NSCWP
Sizes: 1", 2"



CF8M Ball Type Check Valve

NACE MR0175
FNPT Ends
Viton Seat, 316SS Ball
2,000, 3,000 & 5000 PSI NSCWP
Sizes: 1", 2"



WCB Ball Type Check Valve

NACE MR0175
FNPT Ends
Viton Seat, 316SS Ball
2,000, 3,000 & 5,000 PSI NSCWP
Sizes: 1", 2"

ZSPEC®

FLOW CONTROL

VALVES & FITTINGS

OILFIELD | MARINE | INDUSTRIAL | AGRICULTURE

BALL VALVES



BBV Series Brass Ball Valve

Full Port,
FNPT Ends,
Locking Device Handle
600 PSI NSCWP
Sizes: 1/4" thru 4"



BBVH Series Heavy Duty Brass Ball Valve

Heavy Weight Body, Full Port, FNPT Ends,
Locking Device Handle
600 PSI NSCWP
Sizes: 1", 2", 2-1/2", 3", 4"



1000 Series Oilfield Ball Valve

NACE MR0175, FNPT Ends,
Locking Device Handle
1,000 PSI NSCWP
Sizes: 1" FP, 2" RP, 2" FP, 3" RP,
3" FP, 4" RP



1500 Series Oilfield Ball Valve

NACE MR0175,
FNPT Ends,
Locking Device Handle
1,500 PSI NSCWP
Sizes: 1" FP, 2" RP



2000 Series Oilfield Ball Valve

NACE MR0175, FNPT Ends,
Locking Device Handle
2,000 PSI NSCWP
Sizes: 1" FP, 2" RP, 2" FP, 2-1/2" FP,
3" RP, 3" FP, 4" RP, 4" FP



3000 Series Oilfield Ball Valve

NACE MR0175, FNPT Ends,
Locking Device Handle
3,000 PSI NSCWP
Sizes: 1" FP, 2" RP, 2" FP, 2-1/2" FP,
3" FP, 4" FP



3600 Series Oilfield Ball Valve

NACE MR0175,
EUE 8Rnd Ends,
Locking Device Handle
3,600 PSI NSCWP
Sizes: 2-3/8", 2-7/8"



5000 Series Oilfield Ball Valve

NACE MR0175, FNPT Ends,
Locking Device Handle
5,000 PSI NSCWP
Sizes: 1" FP, 2" RP, 2" FP, 2-1/2" FP, 3" FP



1000 Series Non-Freeze Ball Valve

NACE MR0175, FNPT Ends,
Reduced Port
1,000 PSI NSCWP
Sizes: 2", 3", 4"



1500 Series Bolted Body Ball Valve

NACE MR0175, FNPT Ends,
Locking Device Handle
1,500 PSI NSCWP
Sizes: 2.5" FP



2000 Series Bolted Body Ball Valve

NACE MR0175, FNPT Ends,
Locking Device Handle
2,000 PSI NSCWP
Sizes: 1" FP, 2" FP



3000 Series Bolted Body Ball Valve

NACE MR0175, FNPT Ends,
Locking Device Handle
3,000 PSI NSCWP
Sizes: 2" FP, 2" RP



BS2K Series Barstock Ball Valve

NACE MR0175, B16.34 Design,
FNPT Ends, RP
Standard Non Locking Handle
2,000 PSI NSCWP
Sizes: 1/4" thru 2"



5000 Series Bolted Body Ball Valve

NACE MR0175, FNPT Ends,
Locking Device Handle
5,000 PSI NSCWP
Sizes: 2" FP, 2" RP, 3" FP, 4" RP

BALL VALVES



CS2K Series Seal Welded WCB Ball Valve

NACE MR0175, Full Port, FNPT Ends,
Locking Device Handle
2,000 PSI NSCP
Sizes: 1/4" thru 2"



CS1K Series Seal Welded WCB Ball Valve

NACE MR0175, Full Port, FNPT Ends,
Locking Device Handle
1,000 PSI NSCP
Sizes: 2-1/2", 3", 4"



CS3K Series WCB Seal Welded Ball Valve

NACE MR0175, Firesafe to API607,
B16.34, Full Port, FNPT Ends,
Locking Device Handle
3,000 PSI NSCP
Sizes: 1/4" thru 2"



SS1K Series Seal Welded CF8M Ball Valve

NACE MR0175, Full Port, FNPT Ends,
Locking Device Handle
1,000 PSI NSCP
Sizes: 2-1/2", 3", 4"



SSR1K Series Reduced Port CF8M Ball Valve

Reduced Port, FNPT Ends,
Locking Device Handle
1,000 PSI NSCP
Sizes: 1/4" thru 2"



SS3K Series CF8M Seal Welded Ball Valve

NACE MR0175, Firesafe to API607,
B16.34, Full Port, FNPT Ends,
Locking Device Handle
3,000 PSI NSCP
Sizes: 1/4" thru 2"



SS6K Series CF8M Seal Welded Ball Valve

NACE MR0175, Firesafe to API607,
B16.34, Full Port up to 1-1/2" size,
FNPT Ends, Locking Device Handle
6,000 PSI NSCP
Sizes: 1/4" thru 2"



BS2K-L Series Barstock Ball Valve

NACE MR0175, B16.34 Design,
FNPT Ends, RP
Locking Device Handle
2,000 PSI NSCP
Sizes: 1/4" thru 2"



CS6K Series WCB Seal Welded Ball Valve

NACE MR0175, Firesafe to API607,
B16.34, Full Port up to 1-1/2" size,
FNPT Ends, Locking Device Handle
6,000 PSI NSCP
Sizes: 1/4" thru 2"



SS2K Series Seal Welded CF8M Ball Valve

NACE MR0175, Full Port, FNPT Ends
Locking Device Handle
2,000 PSI NSCP
Sizes: 1/4" thru 4"



BVT Series CF8M Bolted Body Ball Valve

NACE MR0175, Full Port, FNPT Ends,
3 Piece, Locking Device Handle
1,000 PSI NSCP
Sizes: 1", 2"



SS2K Series Seal Welded CF8M (MXF)

NACE MR0175, Full Port,
MNPT X FNPT Ends
Locking Device Handle
2,000 PSI NSCP
Sizes: 1/4", 1/2"



BVICS Series WCB Isolator Ball Valve

NACE MR0175,
Full Port,
Locking Device Handles
1": 2,000 PSI NSCP
2": 1,500 PSI NSCP



GVB Series Grooved End Ball Valve

NACE MR0175,
Grooved Ends, Reduced Port
2" thru 4": 1,000 PSI NSCP
6": 1,500 PSI NSCP
Sizes: 2", 3", 4", 6"

BALL VALVES



BVISS Series CF8M Isolator Ball Valve

NACE MR0175, Full Port,
Locking Device Handles
1": 2,000 PSI NSCWP
2": 1,500 PSI NSCWP



SR Series CF8M Spring Return Handle Type

NACE MR0175,
FNPT Ends, Full Port
1/4"-1": 2,000 PSI NSCWP
1-1/4"-2": 1,500 PSI NSCWP



SR Series WCB Spring Return Handle Type

NACE MR0175,
FNPT Ends, Full Port
1/4"-1": 2,000 PSI NSCWP
1-1/4"-2": 1,500 PSI NSCWP



BVZ Series Socket Weld Ball Valve

NACE MR0175, Firesafe to API607,
Full Port, Socket Weld Ends,
3,000 PSI NSCWP
Sizes: 1/2" thru 1"



BVZ Series Threaded Ball Valve

NACE MR0175, Firesafe to API607,
Full Port, FNPT Ends,
3,000 PSI NSCWP
Sizes: 1/2" thru 2"

ZSPEC®
FLOW CONTROL

VALVES & FITTINGS

OILFIELD | MARINE | INDUSTRIAL | AGRICULTURE

ZSPEC®
FLOW CONTROL
VALVES & FITTINGS
OILFIELD | MARINE | INDUSTRIAL | AGRICULTURE

FLANGED END BALL VALVES



WCB Flanged End Ball Valve

NACE MR0175, Firesafe to API607,
B16.34, API6D, Raised Face
Full Port and Reduced Port
Classes: 150, 300, 600
Sizes: 2" thru 6"



CF8M Flanged End Ball Valve

NACE MR0175, Firesafe to API607,
B16.34, API6D, Raised Face
Full Port and Reduced Port
Classes: 150, 300, 600
Sizes: 2" thru 6"

NON-FREEZE TANK VALVES



Non-Freeze Tank Valve

150 PSI NSCWP
Sizes: 2", 3"

BULL PLUGS



A234 WPB Bull Plugs

Sizes: 1/8" thru 8"
STD, XH, XXH

SWAGE NIPPLES



A234 WPB Swage Nipples

Diameters: 1/8" thru 10"
STD, XH, XXH



Bevel x Thread A234 WPB Swage Nipples

Diameters: 2" thru 6"
STD, XH

SEAMLESS NIPPLES



S40, S80 and XXH A106 Seamless Nipples

Diameters: 1/4" thru 6"
Lengths: CL thru 12"



S80 316SS Seamless Nipples

Diameters: 1/4" thru 4"
Lengths: CL thru 12"

NEEDLE VALVES



NV Series Needle Valve

Types: Standard or Mini
FNPT x FNPT or MNPT x FNPT
6,000 PSI NSCWP or 10,000 PSI NSCWP
Materials: A105 or 316SS
Sizes: 1/4", 1/2", 3/4", 1"



A Series Angle Needle Valve

NACE MR0175
MNPT x FNPT
6,000 or 10,000 PSI NSCWP
Materials: A105 or 316SS
Sizes: 1/4", 1/2"



R Series Reducing Needle Valve

NACE MR0175
1/2" MNPT x 1/4" FNPT
6,000 PSI NSCWP
Material: 316SS



M Series Multiport Gauge Needle Valve

NACE MR0175
MNPT x FNPT
10,000 PSI NSCWP
Material: 316SS
Size: 1/2"

SWIVEL JOINTS



Code Silver Swivel Joints

FNPT Ends, Figure 602
6,000 PSI NSCWP
Sizes: 1", 1-1/4", 1-1/2", 2", 3"
Styles: 10, 20, 30, 50, 60



Code Silver Swivel Joint Repair Kit

Each kit repairs one turn.
Includes all parts including the grease fitting.
Sizes: 1", 1-1/4", 1-1/2", 2", 3"



Code Red Swivel Joints

1502 Ends, Long Radius
15,000 PSI NSCWP
1502 Male x Female
1502 Male x Male
Sizes: 2", 3"
Styles: 10, 50



Code Red Swivel Joint Repair Kit

Sizes: 2", 3"

EXPANSION JOINTS



Style 101 150# Expansion Joint

Nitrile with Neoprene Cover
225 PSI NSCWP
Sizes: 2" thru 12"

PUP JOINTS



1502 NPS Pup Joints

15,000 PSI NSCWP
Size: 2", 3"
Lengths from 6" up to 15 ft.

BOLTED SLEEVE COUPLINGS



Bolted Sleeve Coupling

Diameters: 1" thru 16"
Lengths: 5", 7", 12", 16", 24"



Spare Parts for Bolted Sleeve Couplings

Bolts: 5/8 x 8, 5/8 x 11, 5/8 x 15, 5/8 x 19, 5/8 x 27
Gaskets: 1" thru 16" available in Nitrile Rubber

CHOKES



1502 Adjustable Choke

15,000 PSI NSCWP
Size: 2"



ZN60 Positive Choke

5,000 PSI NSCWP
Size: 2"



Z63 Adjustable Choke

3,000 PSI NSCWP
Size: 3"
Trim: 2"
Trim Materials: Hardened Steel or SS + Tungsten Carbide



ZN60 Adjustable Choke

5,000 PSI NSCWP
Size: 2"
Trims: 3/4" or 1"
Trim Materials: Hardened Steel or SS + Tungsten Carbide



ZN62 Adjustable Choke

5,000 PSI NSCWP
Size: 2-1/16"
Trims: 3/4" or 1"
Trim Materials: Hardened Steel or SS + Tungsten Carbide



Z65 Adjustable Choke

5,000 PSI NSCWP
Size: 3"
Trim: 2"
Trim Materials: Hardened Steel or SS + Tungsten Carbide

CROSSOVERS



1502 Female x Male EUE Crossover

1502 Female x 2-3/8 Male EUE or 1502 Female x 2-7/8 Male EUE
10,000 PSI NSCWP
Sizes: 2"



1502 Female x Female Crossover

15,000 PSI NSCWP
Sizes: 2", 3"



1502 Female x MNPT Crossover

10,000 PSI NSCWP
Sizes: 2"



1502 Male x Male EUE Crossover

1502 Male x 2-3/8 Male EUE or 1502 Male x 2-7/8 Male EUE
10,000 PSI NSCWP
Size: 2"



2" 1502 Female x 3 1/2" EUE Crossover

10,000 PSI NSCWP



1502 Male x Male Crossover

15,000 PSI NSCWP
Sizes: 2"



1502 Male x Female Crossover

15,000 PSI NSCWP
Sizes: 2", 3"



3" 1502 Female x 2" 1502 Male Crossover

15,000 PSI NSCWP



1502 Male x MNPT Crossover

10,000 PSI NSCWP
Size: 2"



4" Fig 200 Fem x 150 Pattern Flange Crossover

Available in 3" and 5-1/8"
Face to Face Dimensions



3" 1502 Male x 2" 1502 Female Crossover

15,000 PSI NSCWP



Flange Adapter Assembly

4" FIG. 200 2-PC Nut
4" FIG. 206 Male x 150 Pattern
Flange Adapter
4" Plug (handle type)
Chain Assembly

FLANGE CROSSOVER & ADAPTERS



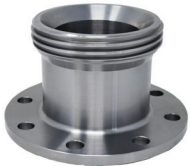
Female Flange Crossover

1-13/16" 10K X 2" 1502 Female
2-1/16" 10K X 2" 1502 Female
2-1/16" 5K X 2" 1502 Female
2-9/16" 10K X 2" 1502 Female
3-1/8" 5K X 2" 1502 Female



Male Flange Crossover

2-1/16" 10K X 2" 1502 Male
2-1/16" 5K X 2" 1502 Male
2-9/16" 10K X 2" 1502 Male



Female Flange Adapters

4" Fig. 200 Female X 125 Pattern Flange
4" Fig. 200 Female X 150 Pattern Flange
4" Fig. 200 Female X 150 Pattern Flange
- Long Pattern
6" Fig. 200 Female X 150 Pattern Flange



Male Flange Adapters

4" Fig. 206 Male x 150 Pattern Flange
4" Fig. 206 Male x 150 Pattern Flange
- Long Pattern
6" Fig. 206 Male x 150 Pattern Flange

BULLDOG TANK UNIONS



Air Grip Unions

Sizes: 4" thru 16"



ZSPEC® is an authorized distributor
of Bulldog Tank Unions



Frac Tank Unions

Sizes: 6", 8"
Male Socket Weld Sub with Nut



Frac Plug

Sizes: 6", 8"



Mud Tank Unions

Sizes: 3" thru 16"



Frac Nipple

Sizes: 6" 8"

PLUG VALVES



ZSPEC® plug valves and parts are interchangeable with major brands of LT style plug valves. The valves and the replaceable components (plug, inserts, seal kits) have been engineered for maximum durability and usability.

STANDARD SERVICE

| SIZE | PART # | END CONNECTION | NSCWP | END TO END DIMENSION |
|------------------------|---------|----------------|------------|----------------------|
| 1X1 | ZH0028 | 1502 | 15,000 psi | 10.56" |
| 1X2 | ZH0023 | 1502 | 15,000 psi | 10.56" |
| 2X2 | ZH0006 | 1502 | 15,000 psi | 13.88" |
| 2X2 | ZH0032 | FNPT | 10,000 psi | 9.50" |
| 3X3 | ZH0055 | 1502 | 15,000 psi | 17.00" |
| 3X3 with Gear Operator | ZH0055G | 1502 | 15,000 psi | 17.00" |

H2S SERVICE

| SIZE | PART # | END CONNECTION | NSCWP | END TO END DIMENSION |
|------------------------|---------|----------------|------------|----------------------|
| 1X2 | ZH0118 | 1502 | 10,000 PSI | 10.56" |
| 2X2 | ZH0109 | 1502 | 10,000 PSI | 13.88" |
| 3X3 | ZH0016 | 1502 | 10,000 PSI | 17.00" |
| 3X3 with Gear Operator | ZH0016G | 1502 | 10,000 PSI | 17.00" |



Plug Valve Repair Kit

ZSPEC® plug valve repair kits include plug, seals & inserts.

Sizes: 1", 2", 3"

HAMMER UNIONS



ZSPEC® Hammer Unions are manufactured from high quality forgings and castings. The figure appropriate materials are selected for each respective figure number. Threaded and Butt Weld end connections are both readily available. Material traceability and MTRS are available on all hammer unions.

| Figure No. | Color Code | NON-SHOCK COLD WORKING PRESSURE RATING (PSI) STANDARD SERVICE | | Nominal Pipe Size (in inches) | | | | | | | | | | | | |
|------------|------------|--|-------|-------------------------------|----|-------|------|----|------|----|----|----|----|----|----------|-----|
| | | NSCWP | TEST | .5" | 1" | 1.25" | 1.5" | 2" | 2.5" | 3" | 4" | 5" | 6" | 8" | 10" | 12" |
| 100 | | Yellow/Black | 1000 | 1500 | | | | | ● | ● | ● | ● | ● | ● | | |
| 100H | | Gray /Black | 400 | 600 | | | | | | | ● | | | | | |
| 110 | | Burnt Orange/ Burnt Orange | 2500 | 3750 | | | | ● | | | | | | | | |
| 110 | | Brown/Brown | 4000 | 6000 | | | | ● | | ● | | | | | | |
| 200 | | Gray/Blue | 2000 | 3000 | | ● | ● | ● | ● | ● | ● | | ● | ● | ● | |
| 201 | | Gray/Beige | 3000 | 4000 | | | | ● | ● | | | | | | | |
| 206 | | Gray/Blue | 2000 | 3000 | | ● | ● | ● | ● | ● | ● | | ● | ● | ● | |
| 206H | | Gray/Blue | 400 | 600 | | | | | | | ● | | ● | ● | | |
| 207 | | Gray/Blue | 2000 | 3000 | | | | ● | | ● | ● | | ● | ● | cap only | |
| 211 | | Blue/Gray | 2000 | 3000 | | | | ● | | ● | | | | | | |
| 300 | | Light Orange/ Gray | 2000 | 3000 | ● | ● | | ● | | | | | | | | |
| 301 | | Gray/Gray | 3000 | 4500 | | ● | | ● | | | | | | | | |
| OCT | | Gray/Gray | 3000 | 4500 | | ● | | ● | | | | | | | | |
| 400 | | Maroon/Black | 4000 | 6000 | | | | ● | | ● | ● | | | | | ◆ |
| 402 | | Black/Black | 4000 | 6000 | | | | ● | | | | | | | | |
| G | | Silver/Orange | 6000 | 9000 | | | ● | ● | | | | | | | | |
| 602 | | Orange/Black | 6000 | 9000 | | ● | ● | ● | ● | ● | ● | | | | | |
| 1002 | | Blue/Red | 10000 | 15000 | | ● | ● | ● | | ● | ● | ◆ | ◆ | | | |
| 1003 | | Green/Black | 7500 | 11250 | | | | | | ● | ● | ● | | | | |
| 1502 | | Red/Blue | 15000 | 22500 | | ● | ● | ● | ● | ● | ● | ● | | | | |

◆ indicates a reduction in working pressure as listed: 12" Fig 400: NSCWP = 2500 psi (3750 psi test) 5" Fig 1002 Butt Weld: NSCWP = 7500 psi (11250 psi test)
5" Fig 1002 Threaded: NSCWP = 5000psi (7500 psi test) 6" Fig 1002 Butt Weld: NSCWP = 7500 psi (11250 psi test)



WARNINGS ON HAMMER UNIONS AND PRODUCTS THAT HAVE HAMMER UNION END CONNECTIONS

When installing and handling any pressure containing products, personnel must be qualified and properly trained on the safe installation and use of the products. Our products are designed and qualified to meet industry standards and it is the user's responsibility in making the appropriate selection of products through any required design and/or analysis of the user's requirements so that the products will not pose any health or safety hazards. Failure to adhere to the warnings listed on this form may result in personal injury or death. Never strike, impact, tighten or loosen pressurized unions or connections. Complete and proper make-up of union components is required to attain rated working pressure.

Always pay special attention during the make-up process to ensure that this is achieved. Never use products that have been damaged or deteriorated or corroded. Never exceed the rated working pressure of the union or connection. Never assemble union components that are not identical in size, figure and pressure rating. Should leakage be detected, take the appropriate steps to assure that the piping system is completely depressurized and any remaining fluid is removed and properly disposed of, then proceed to remove the affected component(s) from service and permanently dispose of the affected component(s).

For overhead installations, follow safe practices with consideration of the combined weight of all components, piping and contained fluids when sizing the piping supports and/or other necessary infrastructure to support the combined weight. Standard hammer unions and connections are not prepped for sour gas service. Do not interchange standard and sour gas components. Hammer unions and connections prepped for sour gas service will be marked with "Sour Gas Svc." or "H2S". When temperatures are below 32F, please use extreme caution when making or breaking union connections as the lower temperatures negatively affect the impact strength of iron and steel.

INTEGRAL FITTINGS



1502 Cross FFFM

15,000 PSI NSCWP
Sizes: 2"



1502 Cross FFMM

15,000 PSI NSCWP
Size: 2"



Cushion Elbow FxM

15,000 PSI NSCWP
Sizes: 2", 3"



Cushion Elbow MxM

15,000 PSI NSCWP
Sizes: 2", 3"



1502 Tee FMF

15,000 PSI NSCWP
Size: 2", 3"



1502 Tee MFM

15,000 PSI NSCWP
Size: 2"



1502 Tee FFF

15,000 PSI NSCWP
Size: 2"



1502 Cross MFMF

15,000 PSI NSCWP
Sizes: 2"



Cushion Elbow FxF

15,000 PSI NSCWP
Size: 2"



Double Cushion Elbow FxM

15,000 PSI NSCWP
Size: 2"



1502 Tee FFM

15,000 PSI NSCWP
Sizes: 2", 3"



1502 Tee FMM

15,000 PSI NSCWP
Sizes: 2", 3"



1502 Tee MMM

15,000 PSI NSCWP
Size: 2"



1502 MXF 9.19" Spacer

15,000 PSI NSCWP
Size: 2"

INTEGRAL FITTINGS



1502 MXF 14" Spacer

15,000 PSI NSCWP
Size: 2"

MANIFOLDS



5 Valve Dual Adjustable Choke Manifold

2x2 1502 Plug Valves with dual
1502 adjustable chokes.
Skid Mounted



5 Valve Single Adjustable Choke Manifold

2x2 1502 Plug Valves with single
1502 adjustable chokes.
Skid Mounted

PONY RODS



Pony Rods

API 11B Grade D AISI 4130
Sizes: 5/8", 3/4", 7/8", 1"
Lengths: 2', 4', 6', 8'

SUCKER ROD COUPLINGS



Sucker Rod Couplings

API 11B Grade D AISI 5140
Class T, Spray Metal & Combination Couplings
Full Size & Slim Hole
Sizes: 5/8", 3/4", 7/8", 1"

777Z HEAVY DUTY FLEXIBLE COUPLINGS



777Z Heavy Duty Flexible Couplings

Sizes: 1" thru 16"

[illegible]

[illegible]

ZSPEC®
FLOW CONTROL
VALVES & FITTINGS

5728 North Eldridge Parkway, B-2 Suite 101
Houston, TX 77041
United States

Phone : (713) 329-5700

Fax : (713) 329-5703

www.zspec.com

Our product info, design or construction may change without prior notice.

© 2025 ZSPEC® Flow Control, ALL Rights Reserved.





5728 North Eldridge Parkway, B-2 Suite 101
Houston, TX 77041
United States

Phone : (713) 329-5700

Fax : (713) 329-5703

www.zspec.com

ZSPEC®
CATALOG